

LINED VALVE MANUAL



HEAD OFFICE

54-6, Taejangnongdan-gil, Won Ju-si, Kangwon-Do, Korea.
WEEON Co.Ltd.

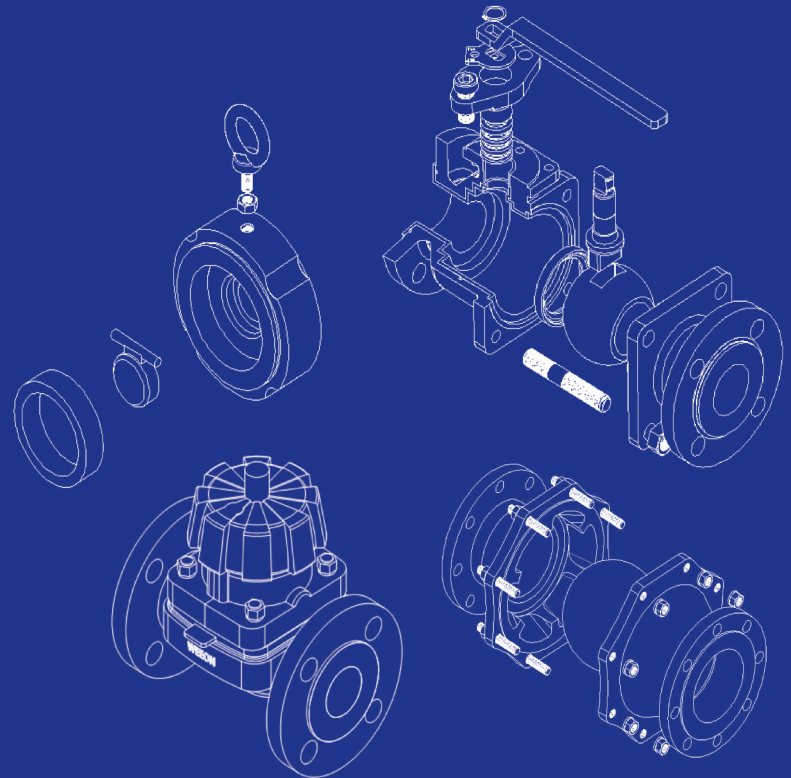
TELEFON

82-33-743-0203

TELEFAX

82-33-743-0205

www.weeon.co.kr



LINED BALL VALVE

LINED BALL CHECK VALVE

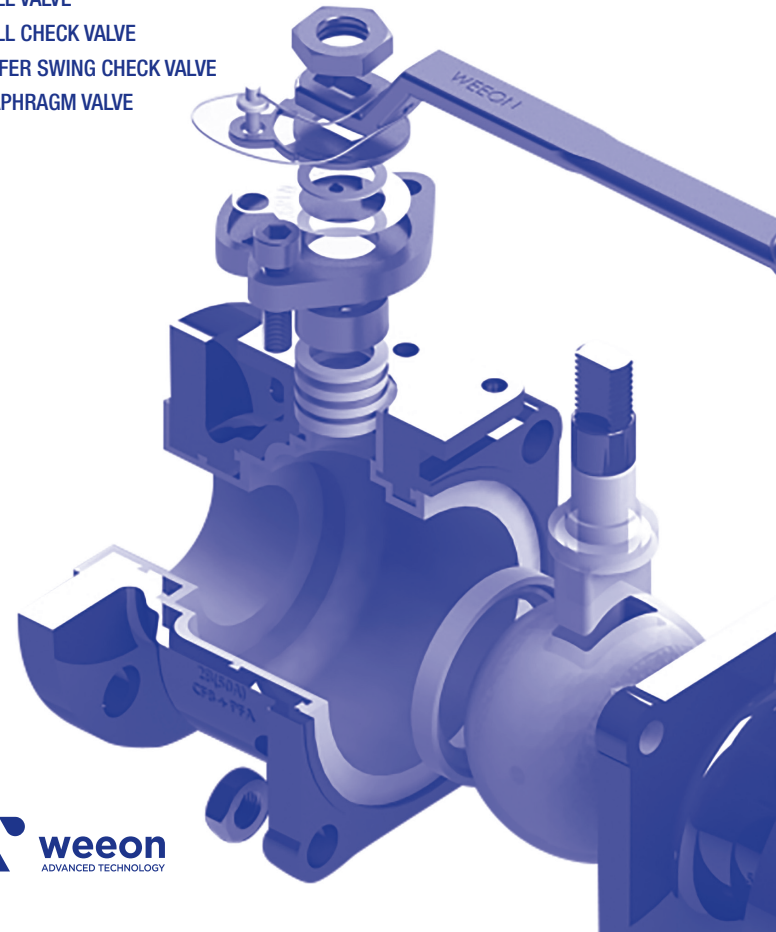
LINED WAFER SWING CHECK VALVE

LINED DIAPHRAGM VALVE



LINED VALVE MANUAL

LINED BALL VALVE
LINED BALL CHECK VALVE
LINED WAFER SWING CHECK VALVE
LINED DIAPHRAGM VALVE



HEAD OFFICE

54-6, Taejangnongdan-gil, Won Ju-si, Kangwon-Do, Korea.

WEEON Co.Ltd.

TELEFON

82-33-743-0203

TELEFAX

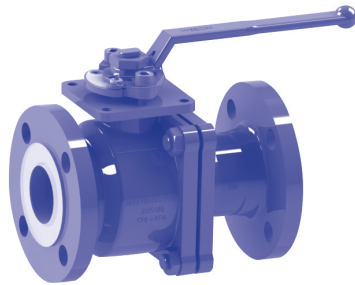
82-33-743-0205

www.weeon.co.kr

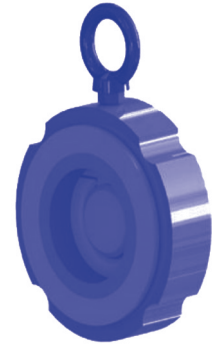


PRODUCT LINE-UP

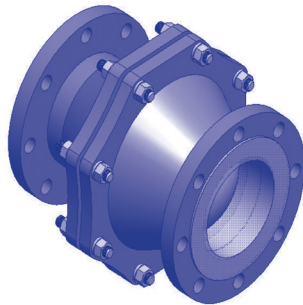
**LINED
BALL VALVE**



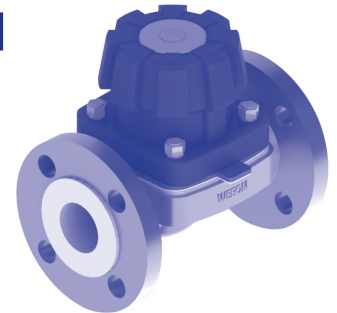
**LINED WAFER SWING
CHECK VALVE**



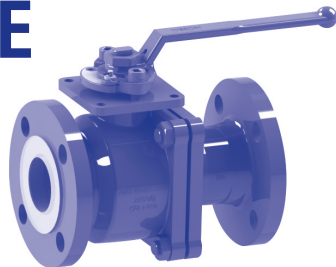
**LINED BALL
CHECK VALVE**



**LINED DIAPHRAGM
VALVE**



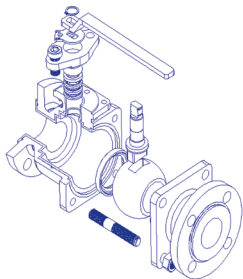
LINED BALL VALVE MANUAL



INSTALLATION OPERATION & MAINTENANCE

Size : 15A~150A & 1/2B~6B

SECTION VIEW



NO	DESCRIPTION	Q'TY	MATERIAL	
			STAINLESS STEEL	CARBON STEEL
1	BODY	1	ASTM A351 CF8 / PFA LINED	ASTM A216 WCB / PFA LINED
2	COVER	1	ASTM A351 CF8 / PFA LINED	ASTM A216 WCB / PFA LINED
3	BALL	1	ASTM A351 CF8 / PFA LINED	
4	STEM	1	ASTM A351 CF8 / PFA LINED	
5	LINER		PFA	
6	HANDLE	1	ASTM A351 CF8	
7	BUSH	1	SUS304	
8	SEAT RING	2	PTFE	
9	STUD BOLT	4	SUS304	
10	GRAND PACKING	4	PTFE	
11	GRAND	1	SUS304	
12	GRAND BOLT	2	SUS304	
13	INDICATOR	1	SUS304	
14	SNAP RING	1	SUS304	
15	NUT	4	SUS304	

USABLE LIQUID TEMPERATURE & MAXIMUM WORKING PRESSURE

STANDARD

- Temperature : Under 150°C
- Pressure : Under 15Kg/cm² (150#) Under 30Kg/cm² (300#)

VACUUM

- Temperature : Under 150°C
- Vacuum : -760 mmHg

SAFETY INSTRUCTIONS

The next is the safety instructions against the valve(Plastic valve) which is produced from WEEON. Please read the following safety instructions carefully and observe them!

GENERAL INFORMATION

The prerequisite for perfect functioning of this WEEON valve:

- * Proper transport and storage
- * Operation according to these operating instructions

- * Installation and commissioning by trained staff
- * Correct maintenance

Correct assembly, operation and servicing or repair work ensure faultless valve operation. The WEEON valve must be used according to these directions. All information in these operating instructions regarding operation, servicing and maintenance must be observed and applied. If the information is not observed, the operator's guarantee rights and the manufacturer's legal liability cease. The manufacturer shall undertake no responsibility for this valve if these safety instructions are not observed. The descriptions and instructions in these safety instructions refer to standard designs. The safety instructions do not take into account

- * Coincidences and events that may occur during assembly, operation and servicing.
- * Local safety regulations with must be adhered to by the operator-also with respect to any additional assembly personnel.

If you have any questions, please do not hesitate to ask your closest WEEON sales office.

HEAD OFFICE | # 54-6, Taejanganongdan-gil, Won Ju-si, Kangwon-Do, Korea WEEON Co.Ltd.
TELEFON | 82-33-743-0203 TELEFAX | 82-33-743-0205
www.weeon.co.kr



EXPLANATION OF SYMBOLS AND SIGNS



DANGER

This symbol is used to mark a danger sign in order to attract attention to a danger that is imminent that will lead to serious personal injury or death.



WARNING

This symbol marks a warning sign in order to attract attention to a risk; it is to be used when there is a tentat danger of serious injury or death.



CAUTION

This symbol marks a cautionary note in order to attract attention to a danger or an unsafe procedure that may lead to injury to persons or property.

SAFETY INFORMATION



DANGER

RISK OF DEATH! Do not open pressurized valves! RISK of loss of limb or severe bodily injury! Only work on a depressurized plant! RISK OF INJURY from hot plant components! Risk of burns! - Only work on cooled down plant! RISK OF INJURY / RISK OF DEATH! Emission of corrosive chemicals! Wear appropriate protective gear when disassembling!



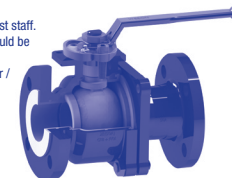
WARNING

RISK of injury from hot plant components! RISK of burns! - Only work on a cooled down plant! * Adhere to legal regulation.



CAUTION

- The WEEON valve should only be assembled and commissioned by qualified and instructed specialist staff. Use qualified staff for operation, servicing, inspection and assembly. The areas of responsibility should be defined precisely and the monitoring of the staff and their competence carried out by the operator. Train staff that have insufficient knowledge or, if necessary, have them trained by the manufacturer / supplier on order by the operator. Ensure that all staff understand the safety instructions.
- Keep within the technical data parameters! Technical data for the valve is clear from the technical documentation. (Data sheet, Resistance table, Characteristic curve etc...)
- Application limit of the valve which is used, the quality of material back consider a condition and investigate. Check its suitability before installation.
- * Correct use the WEEON valve is suited for use as defined in the data sheet.



TRANSPORT AND STORAGE



CAUTION

- The universally recognized technical standards and the regulations regarding
- accident prevention must be observed at all times during handling and transport.

TRANSPORT

- Do not drop it and handle it carefully.
- Unpacking it and then read the operating instructions first.
- Do not drop it and handle it carefully.
- Unpacking it and then read the operating instructions first.

STORAGE

If the valve is not to be installed immediately upon delivery, it must be properly stored. Storage should be in a dry room at a temperature (10~40°C) as constant as possible.

INSTALLATION INSTRUCTIONS

The valve must be appropriate for the piping system operating conditions and the prevailing ambient conditions. (Operating conditions : Temperature and pressure, vacuum) The standard valve can be mounted in any convenient position, preferable with easy access to the packing gland nut, actuator, and positioners. The preferred stem orientation in horizontal.

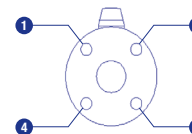
* Flanged End Installation :



DANGER

RISK OF DEATH! Do not open pressurized valves! RISK of loss of limb or severe bodily injury! Only work on a depressurized plant! RISK OF INJURY from hot plant components! Risk of burns! - Only work on a cooled down plant! Emission of corrosive chemicals! Wear appropriate protective gear when disassembling!

FIGURE 1. BOLTING SEQUENCE DRAWING.



OPERATION AND MAINTENANCE

INITIAL START-UP

Normally the valves have been tested for tightness with water and air. Unless other arrangements have been agreed to, there may still be a residual quantity of water in the flow section of the valve. This fluid is to be taken into account due to a possible reaction with the operating medium.

INADMISSIBLE MODES OF OPERATION AND MAINTENANCE

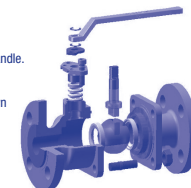
- To open or close the valve, turn the handle.(90° turn)
- Valves should be opened and closed slowly to avoid hammering effect on the valve and pipeline.
- This valve should not be used in throttling applications. The consequences would be damage to the stem, handle.



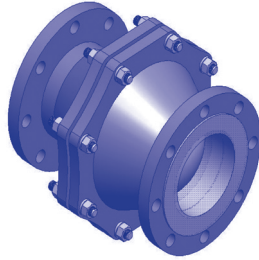
DANGER

RISK OF DEATH! Do not open pressurized valves! RISK of loss of limb or severe bodily injury! Only work on a depressurized plant! RISK OF INJURY from hot plant components! Risk of burns! - Only work on a cooled down plant! Emission of corrosive chemicals! Wear appropriate protective gear when disassembling!

- Put on your personal protective gear.
- Depressurize the plant
- Decontaminate the plant expertly, wash it out and ventilate it.
- Decommission and shut-off the plant
- Completely drain the plant and let it cool down plant.
- Remove the valve carefully.



LINED BALL CHECK VALVE MANUAL



INSTALLATION OPERATION & MAINTENANCE

Size : 20A~100A & 3/4B~4B

SECTION VIEW	NO	DESCRIPTION	Q-TY	MATERIAL	
				STAINLESS STEEL	CARBON STEEL
	1	BODY	1	ASTM A351 CF8 / PFA LINED	ASTM A216 WCB / PFA LINED
	2	COVER	1	ASTM A351 CF8 / PFA LINED	ASTM A216 WCB / PFA LINED
	3	BALL	1	PTFE + RTFE	
	4	STUD BOLT		SUS304	
	5	HEX-NUT		SUS304	
	6	WASHER	1	SUS304	
	7	LINER	1	PFA	
	8	NAME PLATE	1	SUS304	

USABLE LIQUID TEMPERATURE & MAXIMUM WORKING PRESSURE

STANDARD

- Temperature : Under 150°C
- Pressure : Under 15Kg/cm² (150#) Under 30Kg/cm² (300#)

GENERAL INFORMATION

The prerequisite for perfect functioning of this WEEON valve:

- * Proper transport and storage
- * Installation and commissioning by trained staff
- * Operation according to these operating instructions
- * Correct maintenance

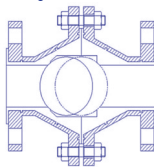
Correct assembly, operation and servicing or repair work ensure faultless valve operation. The WEEON valve must be used according to these directions. All information in these operating instructions regarding operation, servicing and maintenance must be observed and applied. If the information is not observed, the operator's guarantee rights and the manufacturer's legal liability cease. The manufacturer shall undertake no responsibility for this valve if these safety instructions are not observed. The descriptions and instructions in these safety instructions refer to standard designs.

The safety instructions do not take into account

- * Coincidences and events that may occur during assembly, operation and servicing.
- * Local safety regulations with must be adhered to by the operator-also with respect to any additional assembly personnel.

If you have any questions, please do not hesitate to ask your closest WEEON sales office.

HEAD OFFICE | # 54-6, Taejanganngondan-gil, Won Ju-si, Kangwon-Do, Korea WEEON Co.Ltd.
TELEPHONE | 82-33-743-0203 TELEFAX | 82-33-743-0205
www.weeon.co.kr



EXPLANATION OF SYMBOLS AND SIGNS



DANGER

This symbol is used to mark a danger sign in order to attract attention to a danger that is imminent that will lead to serious personal injury or death.



CAUTION

This symbol marks a cautionary note in order to attract attention to a danger or an unsafe procedure that may lead to injury to persons or property.



WARNING

This symbol marks a warning sign in order to attract attention to a risk; it is to be used when there is a potential danger of serious injury or death.

SAFETY INFORMATION



DANGER

RISK OF DEATH! Do not open pressurized valves! RISK of loss of limb or severe bodily injury! Only work on a depressurized plant!
RISK OF INJURY from hot plant components! Risk of burns! - Only work on a cooled down plant!
Emission of corrosive chemicals! Wear appropriate protective gear when disassembling!



WARNING

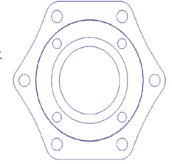
RISK of injury from hot plant components!
RISK of burns! - Only work on a cooled down plant!
* Adhere to legal regulation.



CAUTION

- The WEEON valve should only be assembled and commissioned by qualified and instructed specialist staff. Use qualified staff for operation, servicing, inspection and assembly. The areas of responsibility should be defined precisely and the monitoring of the staff and their competence carried out by the operator. Train staff that have insufficient knowledge or, if necessary, have them trained by the manufacturer / supplier on order by the operator. Ensure that all staff understand the safety instructions.
- Keep within the technical data parameters! Technical data for the valve is clear from the technical documentation. (Data sheet, Resistance table, Characteristic curve etc...)
- Application limit of the valve which is used, the quality of material back consider a condition and investigate. Check its suitability before installation.

* Correct use the WEEON valve is suited for use as defined in the data sheet.



TRANSPORT AND STORAGE



CAUTION

- The universally recognized technical standards and the regulations regarding accident prevention must be observed at all times during handling and transport.

TRANSPORT

- Do not drop it and handle it carefully.
- Unpacking it and then read the operating instructions first.
- Do not drop it and handle it carefully.
- Unpacking it and then read the operating instructions first.

STORAGE

If the valve is not to be installed immediately upon delivery, it must be properly stored. Storage should be in a dry room at a temperature (10~40°C) as constant as possible.

INSTALLATION INSTRUCTIONS

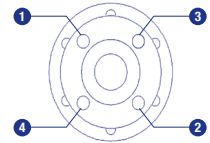
The valve must be appropriate for the piping system operating conditions and the prevailing ambient conditions. (Operating conditions : Temperature and pressure, vacuum) The standard valve can be mounted in any convenient position, preferable with easy access to the packing gland nut, actuator, and positioners. The preferred stem orientation in horizontal. * Flanged End Installation :



DANGER

RISK OF DEATH! Do not open pressurized valves! RISK of loss of limb or severe bodily injury!
Only work on a depressurized plant! RISK OF INJURY from hot plant components!
Risk of burns! - Only work on a cooled down plant! Emission of corrosive chemicals!
Wear appropriate protective gear when disassembling!

FIGURE 1. BOLTING SEQUENCE DRAWING.



OPERATION AND MAINTENANCE

INITIAL START-UP

Normally the valves have been tested for tightness with water and air. Unless other arrangements have been agreed to, there may still be a residual quantity of water in the flow section of the valve. This fluid is to be taken into account due to a possible reaction with the operating medium.

INADMISSIBLE MODES OF OPERATION AND MAINTENANCE

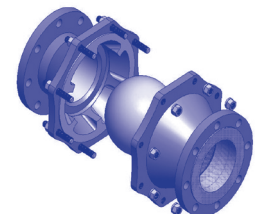
- Normally the open position
- Close in the event of backflow



DANGER

RISK OF DEATH! Do not open pressurized valves! RISK of loss of limb or severe bodily injury!
Only work on a depressurized plant! RISK OF INJURY from hot plant components!
Risk of burns! - Only work on a cooled down plant! Emission of corrosive chemicals!
Wear appropriate protective gear when disassembling!

- Put on your personal protective gear.
- Decommission and shut-off the plant
- Depressurize the plant
- Completely drain the plant and let it cool down plant.
- Decontaminate the plant expertly, wash it out and ventilate it.
- Remove the valve carefully.



LINED WAFER SWING CHECK VALVE MANUAL



INSTALLATION OPERATION & MAINTENANCE

Size : 1-1/2B(40A)~24B(600A)



SECTION VIEW

NO	DESCRIPTION	Q'TY	MATERIAL
1	BODY	1	ASTM A216 WCB / A351 CF8 + PFA
2	LINER	1	PFA
3	DISK	1	PFA / ASTMA351 CF8 + PFA
4	EY EBOLT	1	SUS304



SAFETY INSTRUCTIONS

The next is the safety instructions against the valve(Plastic valve) which is produced from WEEON. Please read the following safety instructions carefully and observe them!

GENERAL INFORMATION

The prerequisite for perfect functioning of this WEEON valve:

- * Proper transport and storage
- * Operation according to these operating instructions

- * Installation and commissioning by trained staff
- * Correct maintenance

Correct assembly, operation and servicing or repair work ensure faultless valve operation.

The WEEON valve must be used according to these directions. All information in these operating instructions regarding operation, servicing and maintenance must be observed and applied. If the information is not observed, the operator's guarantee rights and the manufacturer's legal liability cease. The manufacturer shall undertake no responsibility for this valve if these safety instructions are not observed. The descriptions and instructions in these safety instructions refer to standard designs. The safety instructions do not take into account

* Coincidences and events that may occur during assembly, operation and servicing.

* Local safety regulations with must be adhered to by the operator-also with respect to any additional assembly personnel.



If you have any questions, please do not hesitate to ask your closest WEEON sales office.

HEAD OFFICE | # 54-6, Taejanggongdan-gil, Won Ju-si, Kangwon-Do, Korea WEEON Co.Ltd.

TELEFON | 82-33-743-0203 TELEFAX | 82-33-743-0205

www.weeon.co.kr

EXPLANATION OF SYMBOLS AND SIGNS



DANGER

This symbol is used to mark a danger sign in order to attract attention to a danger that is imminent that will lead to serious personal injury or death.



CAUTION

This symbol marks a cautionary note in order to attract attention to a danger or an unsafe procedure that may lead to injury to persons or property.



WARNING

This symbol marks a warning sign in order to attract attention to a risk; it is to be used when there is a potential danger of serious injury or death.

SAFETY INFORMATION



DANGER

RISK OF DEATH! Do not open pressurized valves! RISK of loss of limb or severe bodily injury! Only work on a depressurized plant!
RISK OF INJURY from hot plant components! Risk of burns! - Only work on a cooled down plant! RISK OF INJURY / RISK OF DEATH! Emission of corrosive chemicals! Wear appropriate protective gear when disassembling!



WARNING

RISK of injury from hot plant components!
RISK of burns! - Only work on a cooled down plant!
* Adhere to legal regulation.



CAUTION

- The WEEON valve should only be assembled and commissioned by qualified and instructed specialist staff. Use qualified staff for operation, servicing, inspection and assembly. The areas of responsibility should be defined precisely and the monitoring of the staff and their competence carried out by the operator. Train staff that have insufficient knowledge or, if necessary, have them trained by the manufacturer / supplier on order by the operator. Ensure that all staff understand the safety instructions.
- Keep within the technical data parameters! Technical data for the valve is clear from the technical documentation. (Data sheet, Resistance table, Characteristic curve etc...)
- Application limit of the valve which is used, the quality of material back consider a condition and investigate. Check its suitability before installation.
- * Correct use the WEEON valve is suited for use as defined in the data sheet.

TRANSPORT AND STORAGE



CAUTION

- The universally recognized technical standards and the regulations regarding accident prevention must be observed at all times during handling and transport.

TRANSPORT

- Do not drop it and handle it carefully.
- Unpacking it and then read the operating instructions first.
- Do not drop it and handle it carefully.
- Unpacking it and then read the operating instructions first.

STORAGE

If the valve is not to be installed immediately upon delivery, it must be properly stored. Storage should be in a dry room at a temperature (10-40°C) as constant as possible.

INSTALLATION INSTRUCTIONS

The valve must be appropriate for the piping system operating conditions and the prevailing ambient conditions. (Operating conditions : Temperature and pressure, vacuum) The standard valve can be mounted in any convenient position, preferable with easy access to the packing gland nut, actuator, and positioners. The preferred stem orientation in horizontal.



DANGER

RISK OF DEATH! Do not open pressurized valves! RISK of loss of limb or severe bodily injury!
Only work on a depressurized plant! RISK OF INJURY from hot plant components!
Risk of burns! - Only work on a cooled down plant! Emission of corrosive chemicals!
Wear appropriate protective gear when disassembling!



OPERATION AND MAINTENANCE

INITIAL START-UP

Normally the valves have been tested for tightness with water and air. Unless other arrangements have been agreed to, there may still be a residual quantity of water in the flow section of the valve. This fluid is to be taken into account due to a possible reaction with the operating medium.

INADMISSIBLE MODES OF OPERATION AND MAINTENANCE



CAUTION

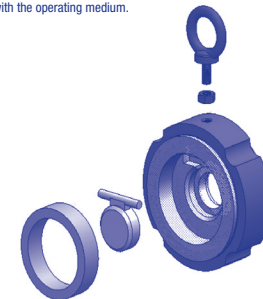
- Normally the open position
- Close in the event of backflow



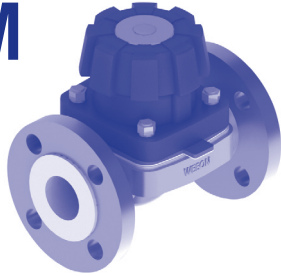
DANGER

RISK OF DEATH! Do not open pressurized valves! RISK of loss of limb or severe bodily injury!
Only work on a depressurized plant! RISK OF INJURY from hot plant components!
Risk of burns! - Only work on a cooled down plant! Emission of corrosive chemicals!
Wear appropriate protective gear when disassembling!

- Put on your personal protective gear.
- Decommission and shut-off the plant
- Depressurize the plant
- Completely drain the plant and let it cool down plant.
- Decontaminate the plant expertly, wash it out and ventilate it.
- Remove the valve carefully.



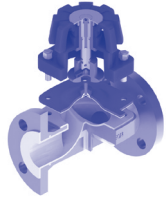
LINED DIAPHRAGM VALVE MANUAL



INSTALLATION OPERATION & MAINTENANCE

Size : 1/2B(15A)~4B(100A)

SECTION VIEW



NO	DESCRIPTION	MATERIAL
1	Handle	PPS
2	SPINDLE	SUS 304
3	Compressor	SUS 304
4	Bonnet	SUS 304
5	Spindle ring	SUS 304
6	EPDM Diaphragm	EPDM
7	PTFE Diaphragm	M - PTFE
8	Bushing	Copper
9	Lining	High Grade PFA
10	Body	SCS 13
Etc	Bolt & Nut	SUS 304

USABLE LIQUID TEMPERATURE & MAXIMUM WORKING PRESSURE

STANDARD

- Temperature : Under 120°C
- Pressure : Under 8Kg/cm²

SAFETY INSTRUCTIONS

The next is the safety instructions against the valve(Plastic valve) which is produced from WEEON. Please read the following safety instructions carefully and observe them!

GENERAL INFORMATION

The prerequisite for perfect functioning of this WEEON valve:

- * Proper transport and storage
- * Operation according to these operating instructions

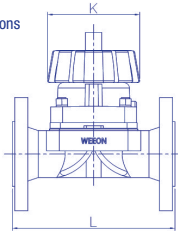
- * Installation and commissioning by trained staff
- * Correct maintenance

Correct assembly, operation and servicing or repair work ensure faultless valve operation. The WEEON valve must be used according to these directions. All information in these operating instructions regarding operation, servicing and maintenance must be observed and applied. If the information is not observed, the operator's guarantee rights and the manufacturer's legal liability cease. The manufacturer shall undertake no responsibility for this valve if these safety instructions are not observed. The descriptions and instructions in these safety instructions refer to standard designs. The safety instructions do not take into account

- * Coincidences and events that may occur during assembly, operation and servicing.
- * Local safety regulations with must be adhered to by the operator-also with respect to any additional assembly personnel.

If you have any questions, please do not hesitate to ask your closest WEEON sales office.

HEAD OFFICE | # 54-6, Taejanganongdan-gil, Won Ju-si, Kangwon-Do, Korea WEEON Co.Ltd.
TELEFON | 82-33-743-0203 TELEFAX | 82-33-743-0205
www.weeon.co.kr



EXPLANATION OF SYMBOLS AND SIGNS



DANGER

This symbol is used to mark a danger sign in order to attract attention to a danger that is imminent that will lead to serious personal injury or death.



WARNING

This symbol marks a warning sign in order to attract attention to a risk; it is to be used when there is a potential danger of serious injury or death.



CAUTION

This symbol marks a cautionary note in order to attract attention to a danger or an unsafe procedure that may lead to injury to persons or property.

SAFETY INFORMATION



DANGER

RISK OF DEATH! Do not open pressurized valves! RISK of loss of limb or severe bodily injury! Only work on a depressurized plant! RISK OF INJURY from hot plant components! Risk of burns! - Only work on cooled down plant! RISK OF INJURY / RISK OF DEATH! Emission of corrosive chemicals! Wear appropriate protective gear when disassembling!



WARNING

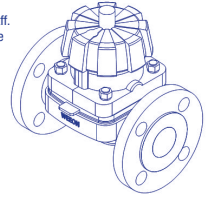
RISK of injury from hot plant components! RISK of burns! - Only work on a cooled down plant! * Adhere to legal regulation.



CAUTION

- The WEEON valve should only be assembled and commissioned by qualified and instructed specialist staff. Use qualified staff for operation, servicing, inspection and assembly. The areas of responsibility should be defined precisely and the monitoring of the staff and their competence carried out by the operator. Train staff that have insufficient knowledge or, if necessary, have them trained by the manufacturer / supplier on order by the operator. Ensure that all staff understand the safety instructions.
- Keep within the technical data parameters! Technical data for the valve is clear from the technical documentation. (Data sheet, Resistance table, Characteristic curve etc...)
- Application limit of the valve which is used, the quality of material back consider a condition and investigate. Check its suitability before installation.

* Correct use the WEEON valve is suited for use as defined in the data sheet.



TRANSPORT AND STORAGE



CAUTION

- The universally recognized technical standards and the regulations regarding accident prevention must be observed at all times during handling and transport.

TRANSPORT

- Do not drop it and handle it carefully.
- Unpacking it and then read the operating instructions first.
- Do not drop it and handle it carefully.
- Unpacking it and then read the operating instructions first.

STORAGE

If the valve is not to be installed immediately upon delivery, it must be properly stored. Storage should be in a dry room at a temperature (10-40°C) as constant as possible.

INSTALLATION INSTRUCTIONS

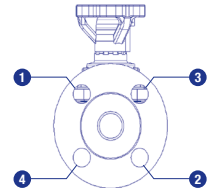
The valve must be appropriate for the piping system operating conditions and the prevailing ambient conditions. (Operating conditions : Temperature and pressure, vacuum) The standard valve can be mounted in any convenient position, preferable with easy access to the packing gland nut, actuator, and positioners. The preferred stem orientation in horizontal.



DANGER

RISK OF DEATH! Do not open pressurized valves! RISK of loss of limb or severe bodily injury! Only work on a depressurized plant! RISK OF INJURY from hot plant components! Risk of burns! - Only work on a cooled down plant! Emission of corrosive chemicals! Wear appropriate protective gear when disassembling!

FIGURE 1. BOLTING SEQUENCE DRAWING.



OPERATION AND MAINTENANCE

INITIAL START-UP

Normally the valves have been tested for tightness with water and air. Unless other arrangements have been agreed to, there may still be a residual quantity of water in the flow section of the valve. This fluid is to be taken into account due to a possible reaction with the operating medium.

INADMISSIBLE MODES OF OPERATION AND MAINTENANCE

- To open or close the valve, turn the handle.
- Valves should be opened and closed slowly to avoid hammering effect on the valve and pipeline.
- This valve should not be used in throttling applications. The consequences would be damage to the handle.



DANGER

RISK OF DEATH! Do not open pressurized valves! RISK of loss of limb or severe bodily injury! Only work on a depressurized plant! RISK OF INJURY from hot plant components! Risk of burns! - Only work on a cooled down plant! Emission of corrosive chemicals! Wear appropriate protective gear when disassembling!

- Put on your personal protective gear.
- Decommission and shut-off the plant
- Depressurize the plant
- Completely drain the plant and let it cool down plant.
- Decontaminate the plant expertly, wash it out and ventilate it.
- Remove the valve carefully.

